

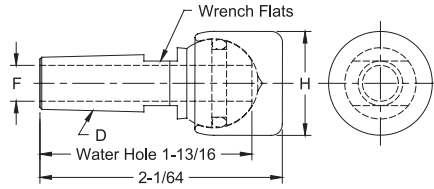
Phone: 800-933-6779

Fax: 205-663-3221

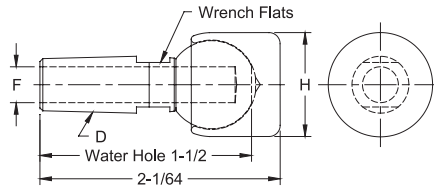
Email: sales@nsrw.com

## SWIVEL HEAD BACK-UP ELECTRODES

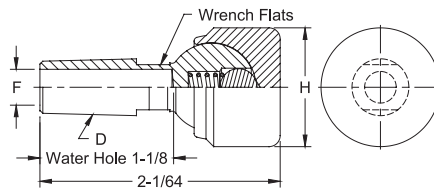
PART No.	Taper D	Water Hole Dia. F	Face Dia. H	Type
16-2304	4 RW	9/32	7/8	Thru hole with "O" ring
16-2305	5 RW	3/8		
16-2302	4 RW	9/32	1	
16-2303	5 RW	3/8		
16-2300	4 RW	9/32	1-1/4	
16-2301	5 RW	3/8		
16-2306	5 RW	3/8	1-1/2	



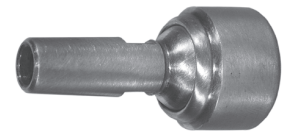
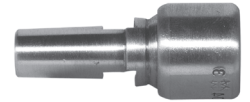
PART No.	Taper D	Water Hole Dia. F	Face Dia. H	Type
16-2314	4 RW	9/32	7/8	Blind hole
16-2315	5 RW	3/8		
16-2312	4 RW	9/32	1	
16-2313	5 RW	3/8		
16-2310	4 RW	9/32	1-1/4	
16-2311	5 RW	3/8		
16-2316	5 RW	3/8	1-1/2	



PART No.	Taper D	Water Hole Dia. F	Face Dia. H	Type
16-23129	4 RW	9/32	1	Blind hole with spring and ball
16-23139	5 RW	3/8		
16-23109	4 RW	9/32	1-1/4	
16-23119	5 RW	3/8		
16-23169	4 RW	9/32	1-1/2	
16-23179	5 RW	3/8		

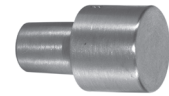
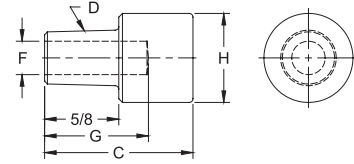


Standard material: Shank - CMW<sup>®</sup>3  
Cap - CMW<sup>®</sup>3  
Optional material available on special order:  
Cap-CMW<sup>®</sup>100, ELKONITE<sup>®</sup> & ELKON<sup>®</sup> facing

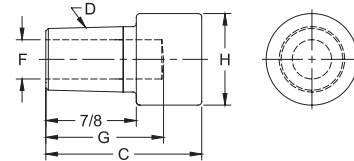


## LARGE DIAMETER FLAT FACED BACK-UP ELECTRODES

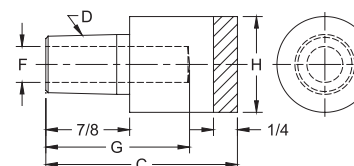
PART No.	Weld Face Material	O.A.L. C	Taper D	Water Hole		Weld Face Dia. H
				Dia. F	Depth G	
16-3012	CMW <sup>®</sup> 3	1-1/4	4 RW	9/32	7/8	3/4
16-3010						1
16-3030						1-1/4



PART No.	Weld Face Material	O.A.L. C	Taper D	Water Hole		Weld Face Dia. H
				Dia. F	Depth G	
16-3021	CMW <sup>®</sup> 3	1-1/2	5 RW	3/8	1-1/8	7/8
16-3020						1
16-3040						1-1/4
16-3050						1-1/2

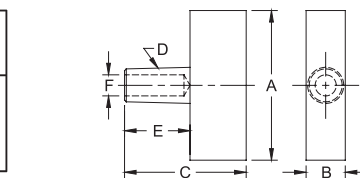


PART No.	Weld Face Material	O.A.L. C	Taper D	Water Hole		Weld Face Dia. H
				Dia. F	Depth G	
16-1392	ELKONITE <sup>®</sup> 10W3	2	5 RW	3/8	1-1/2	1
16-1393						5/8
16-1394						1-1/4
16-1395						1-1/4
16-1395						5/8

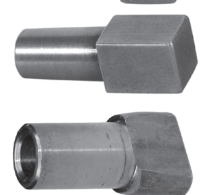
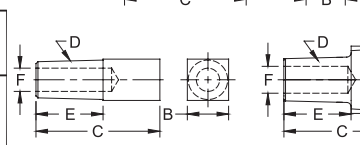


## SQUARE & RECTANGULAR FACED BACK-UP ELECTRODES

PART No.	Weld Face Material	O.A.L. C	Taper D	Shank Length E	Water Hole Dia. F	Weld Face Lgth. A	Weld Face Width B
16-3111	2						
16-382160	1-1/2						
16-3121	2						



PART No.	Weld Face Material	O.A.L. C	Taper D	Shank Length E	Water Hole Dia. F	Weld Face Lgth. A	Weld Face Width B
16-3120	5/8						
16-384110	1/2						



Other tapers and alloys available to special order