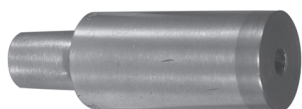
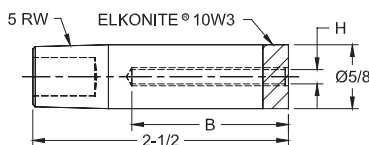


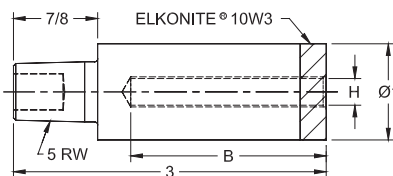
## STUD WELDING ELECTRODES



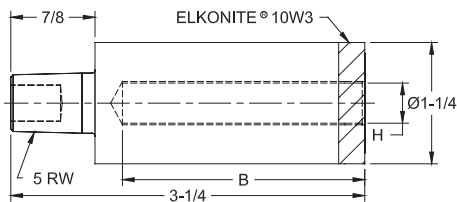
Assembled Electrode Part Number			Insulation I.D. H	Screw Thread Size
Depth B				
.375	.750	1.125	.116 .132	#4 #5
16-3724-1161	16-3724-1162	16-3724-1163		
16-3724-1321	16-3724-1322	16-3724-1323	.140 .150 .157 .169	#6 -- -- #8
.500	1.000	1.500		
16-3724-1401	16-3724-1402	16-3724-1403		
16-3724-1501	16-3724-1502	16-3724-1503		
16-3724-1571	16-3724-1572	16-3724-1573		
16-3724-1691	16-3724-1692	16-3724-1693	.191 .220 .254	#10 #12 .250
.750	1.500	--		
16-3724-1911	16-3724-1912			
16-3724-2201	16-3724-2202			
16-3724-2541	16-3724-2542			



Assembled Electrode Part Number		Insulation I.D. H	Screw Thread Size
Depth B			
.750	1.500	.254	.250
16-3725-2541	16-3725-2542		
1.000	2.000	.277 .317 (8MM) .339 .365 .380	-- .312 -- -- -- .375
16-3725-2771	16-3725-2772		
16-3725-3171	16-3725-3172		
16-3725-3391	16-3725-3392		
16-3725-3651	16-3725-3652		
16-3725-3801	16-3725-3802		



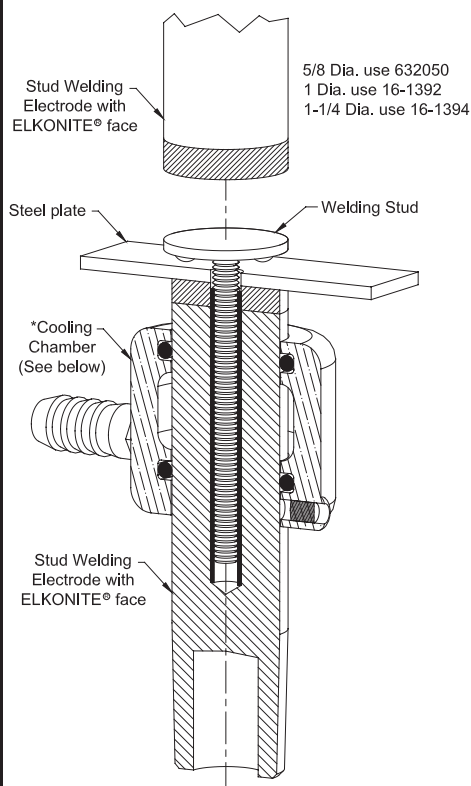
Assembled Electrode Part Number		Insulation I.D. H	Screw Thread Size
Depth B			
1.000	2.000	.401 .427 .444 .502	-- -- .437 .500
16-3726-4011	16-3726-4012		
16-3726-4271	16-3726-4272		
16-3726-4441	16-3726-4442		
16-3726-5021	16-3726-5022	.552 .630 .676 .801	-- -- -- --
1.000	2.000		
16-3726-5521	16-3726-5522		
16-3726-6301	16-3726-6302		
16-3726-6761	16-3726-6762		
16-3726-8011	16-3726-8012		



## FEATURES AND SPECIFICATIONS

- ELKONITE® 10W3 faced CMW®3 material
- Insulated sleeve made of anodized aluminum
- Insulated sleeve are treated to 55 HRC both I.D. & O.D. for wear resistance
- Use with tapered electrode holders
- Use with flat faced electrodes
- Accepts external Cooling Chambers

## TYPICAL SET-UP FOR STUD WELDING



\*For additional information on cooling chamber see page 27

Electrode Dia.	Cooling Chamber
5/8	18-1340
1	18-1342
1-1/4	18-1343