

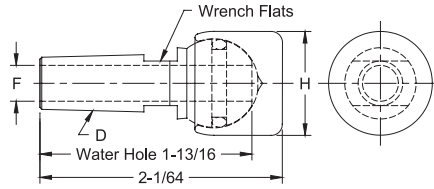
Phone: 800-933-6779

Fax: 205-663-3221

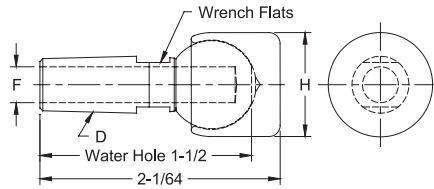
Email: sales@nsrw.com

SWIVEL HEAD BACK-UP ELECTRODES

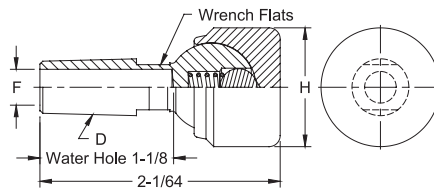
PART No.	Taper D	Water Hole Dia. F	Face Dia. H	Type
16-2304	4 RW	9/32	7/8	Thru hole with "O" ring
16-2305	5 RW	3/8		
16-2302	4 RW	9/32	1	
16-2303	5 RW	3/8		
16-2300	4 RW	9/32	1-1/4	
16-2301	5 RW	3/8		
16-2306	5 RW	3/8	1-1/2	



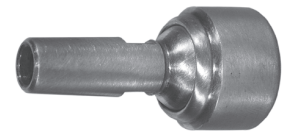
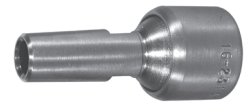
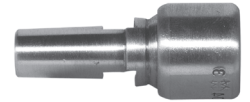
PART No.	Taper D	Water Hole Dia. F	Face Dia. H	Type
16-2314	4 RW	9/32	7/8	Blind hole
16-2315	5 RW	3/8		
16-2312	4 RW	9/32	1	
16-2313	5 RW	3/8		
16-2310	4 RW	9/32	1-1/4	
16-2311	5 RW	3/8		
16-2316	5 RW	3/8	1-1/2	



PART No.	Taper D	Water Hole Dia. F	Face Dia. H	Type
16-23129	4 RW	9/32	1	Blind hole with spring and ball
16-23139	5 RW	3/8		
16-23109	4 RW	9/32	1-1/4	
16-23119	5 RW	3/8		
16-23169	4 RW	9/32	1-1/2	
16-23179	5 RW	3/8		

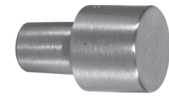
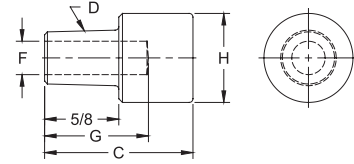


Standard material: Shank - CMW*3
Cap - CMW*3
Optional material available on special order:
Cap-CMW*100, ELKONITE* & ELKON* facing

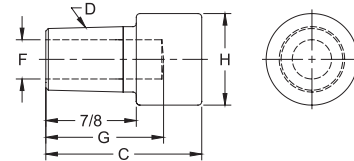


LARGE DIAMETER FLAT FACED BACK-UP ELECTRODES

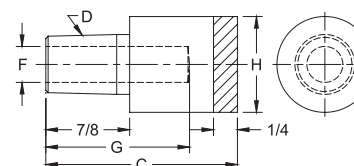
PART No.	Weld Face Material	O.A.L. C	Taper D	Water Hole		Weld Face Dia. H
				Dia. F	Depth G	
16-3012	CMW*3	1-1/4	4 RW	9/32	7/8	3/4
16-3010						1
16-3030						1-1/4



PART No.	Weld Face Material	O.A.L. C	Taper D	Water Hole		Weld Face Dia. H
				Dia. F	Depth G	
16-3021	CMW*3	1-1/2	5 RW	3/8	1-1/8	7/8
16-3020						1
16-3040						1-1/4
16-3050						1-1/2

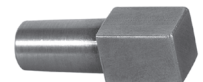
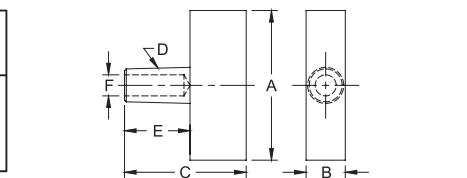


PART No.	Weld Face Material	O.A.L. C	Taper D	Water Hole		Weld Face Dia. H
				Dia. F	Depth G	
16-1392	ELKONITE* 10W3	2	5 RW	3/8	1-1/2	1
16-1393						5/8
16-1394						1-1/2
16-1395						5/8
16-1395						1-1/4

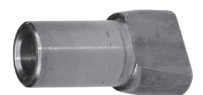
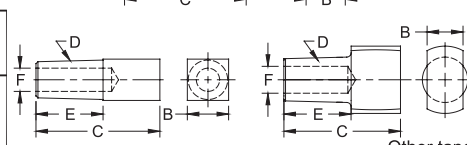


SQUARE & RECTANGULAR FACED BACK-UP ELECTRODES

PART No.	Weld Face Material	O.A.L. C	Taper D	Shank Length E	Water Hole Dia. F	Weld Face Lgth. A	Weld Face Width B
16-382158	CMW*3 Casting	1-5/8	4 RW	7/8	9/32	1-1/2	1/2
16-3111			4 RW			2	5/8
16-382160			5 RW			1-1/2	1/2
16-3121			5 RW			2	5/8



PART No.	Weld Face Material	O.A.L. C	Taper D	Shank Length E	Water Hole Dia. F	Weld Face Lgth. A	Weld Face Width B
16-3110	CMW*3	1-1/2	4 RW	13/16	9/32	1/2	1/2
16-3120	Cold Formed	1-3/4	5 RW	7/8	3/8	5/8	5/8
16-384110	Formed	1-5/8	5 RW	7/8	3/8	15/16	1/2



Other tapers and alloys available to special order