

Tuffaloy offset holders

AD-584-30, for 4 RW Tip
AD-585-30, for 5 RW Tip

AD-584-90, for 4 RW Tip
AD-585-90, for 5 RW Tip

AD-585-90E for 5 RW Tip

UNIVERSAL HOLDER ASSEMBLIES

Holders, Tee Connectors, and Adapters may be assembled as shown, line by line in the table, to make up holder assemblies that will do spot welding in many otherwise inaccessible places. **Goldcrown (ejector-type) holders may be used in place of the non-ejector holders listed.** The Tee Connector is Class 3 RWMA alloy.

HOLDERS				TEE CONNECTORS				ADAPTERS			
Barrel Dia.	Barrel Length	Description	Item No.	Hole Dia.	Shank Dia.	Description	Item No.	Tip Socket	Angle Degrees	Description	Item No.
1	8	N-10085-A	325-0235	1	1	T-1-1	192-1100			Various	
1-1/4	8	N-10085-A	325-0295	1-1/4	1	T-1	192-1000	4RW	90	AD-584-90	190-8490
1-1/4	8	N-10085-A	325-0295	1-1/4	1	T-1	192-1000	4RW	30	AD-584-30	190-8430
1-1/4	8	N-10085-A	325-0295	1-1/4	1-1/4	T-125	192-1250	5RW	90	AD-585-90	190-8590
1-1/2	8	N-10085-A	325-0295	1-1/4	1-1/4	T-125	192-1250	5RW	30	AD-585-30	190-8530
1-1/4	8	N-10085-A	325-0295	1-1/4	1-1/4	T-125	192-1250	6RW	90	AD-586-90	190-8690
1-1/2	8	N-12085-A	325-0375	1-1/2	1-1/2	T-15	192-1500	5RW	90	AD-585-90	190-8590
1-1/2	8	N-12085-A	325-0375	1-1/2	1-1/2	T-15	192-1500	5RW	30	AD-585-30	190-8530
1-1/2	8	N-12085-A	325-0375	1-1/2	1-1/2	T-15	192-1500	6RW	90	AD-586-90	190-8690

Tuffaloy welder arms

Spot welding machine arms made by Tuffaloy reduce set up time and give longer life.

Electrode holder shanks can be attached to these arms from the front, by bolting the cap over them. This means no extra clearance is required between the arms to allow running a shank up (or down) into a hole in the arm. It makes the insertion of Tuffaloy multiple-welding holders, (which are bulkier than simple straight holders) much easier.

One of the most common failures of welder arms is the destruction of the bolt hole threads, due to the relatively soft copper involved. Tuffaloy arms have a transverse steel bar insert in which the bolt hole threads are cut. This provides greatly increased thread life.

Standard arm configurations are shown in the table. Special arms are also available.

A Arm Diameter	B Hole Diameter*	C Arm Length	Description	Item No.
2	1	12	SH-7320-1	630-7321
		16	SH-7320-2	630-7322
		20	SH-7320-3	630-7323
2-1/2	1-1/4	12	SH-7320-4	630-7324
		16	SH-7320-5	630-7325
		20	SH-7320-6	630-7326
3	1-1/2	12	SH-7320-7	630-7327
		16	SH-7320-8	630-7328
		20	SH-7320-9	630-7329

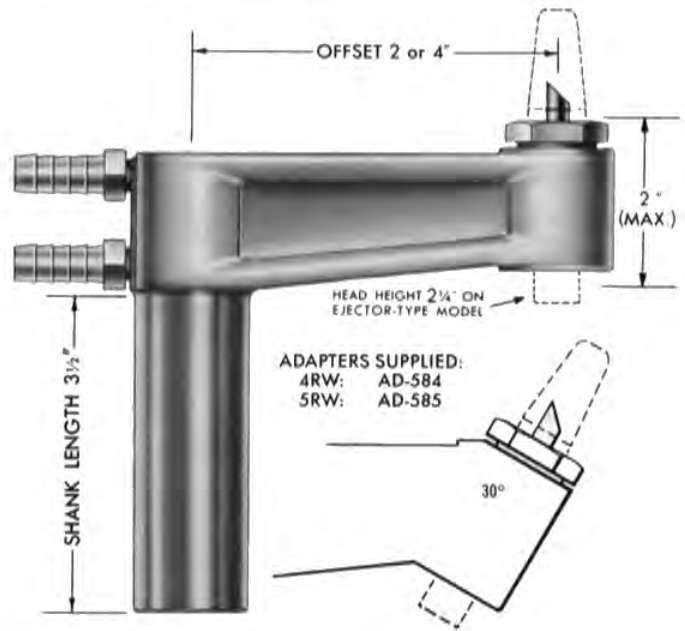
*These diameters will be supplied unless otherwise specified.

STANDARD OFFSET HOLDERS

TUFFALOY Cast Class 3 Alloy offset holders combine long life with good conductivity. Threaded tip adapters are easily replaced when tip socket is worn beyond use, or when you wish to change to a different taper size. The 'in-water' tube, projecting beyond the adapter, is not rigidly fixed, will withstand considerable mistreatment.

TUFFALOY offset holders are made in 2- and 4-inch offsets, and in four shank sizes, with 90° and 30° heads. They are supplied with adapters for No. 4 or No. 5 RW taper tips.

Tip Ejector mechanisms are available on all 90° head holders and the 30° head 4-in. offset holders. When ordering this feature change order number prefix from 'ON' to 'OE'. Example: OE-874-290.



TWO-INCH OFFSET HOLDERS

Adapter Tip Socket	Socket Angle	3/4" SHANK DIA.		7/8" SHANK DIA.		1" SHANK DIA.		1-1/4" SHANK DIA.		1-1/2" SHANK DIA.	
		Description	Item No.	Description	Item No.	Description	Item No.	Description	Item No.	Description	Item No.
4RW	30°	ON-754-230	335-1300*	ON-874-230	335-1400*	ON-14-230	335-1000	ON-1254-230	335-1100	ON-154-230	335-1200*
4RW	90°	ON-754-290	335-1310*	ON-874-290	335-1410*	ON-14-290	335-1010	ON-1254-290	335-1110	ON-154-290	335-1210*
5RW	30°	ON-755-230	335-1350*	ON-875-230	335-1450*	ON-15-230	335-1050	ON-1255-230	335-1150	ON-155-230	335-1250*
5RW	90°	ON-755-290	335-1360*	ON-875-290	335-1460*	ON-15-290	335-1060	ON-1255-290	335-1160	ON-155-290	335-1260

FOUR-INCH OFFSET HOLDERS

4RW	30°	ON-754-430	335-1320*	ON-874-430	335-1420*	ON-14-430	335-1020	ON-1254-430	335-1120	ON-154-430	335-1220*
4RW	90°	ON-754-490	335-1330*	ON-874-490	335-1430*	ON-14-490	335-1030	ON-1254-490	335-1130	ON-154-490	335-1230*
5RW	30°	ON-755-430	335-1370*	ON-875-430	335-1470*	ON-15-430	335-1070	ON-1255-430	335-1170	ON-155-430	335-1270
5RW	90°	ON-755-490	335-1380*	ON-875-490	335-1480*	ON-15-490	335-1080	ON-1255-490	335-1180	ON-155-490	335-1280

*May not be in stock

USING STANDARD HOLDERS

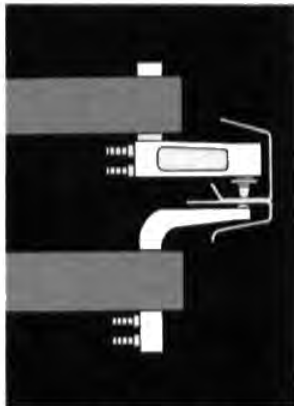


Figure 1: An offset holder over a low-profile paddle-type holder that works in confined spaces.

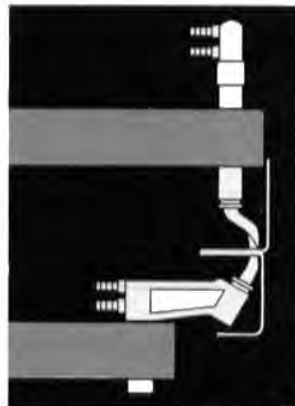


Figure 2: An offset holder with bent tip is used to weld close to the corner of a box section.

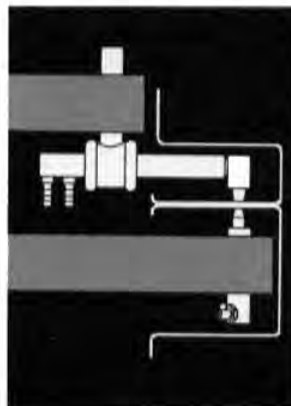


Figure 3: A universal holder (economical because it adjusts to many jobs) over a close-coupled holder.

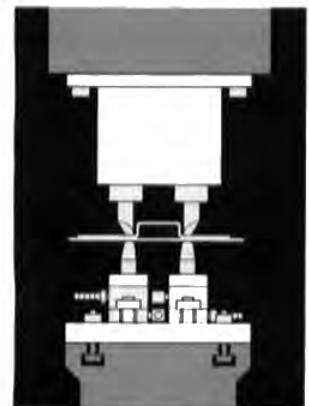


Figure 4: A platen set-up using platen-mounted standard tips under an Equa-Press dual holder.