

# WELDING MACHINE CONTROL CONTACTORS

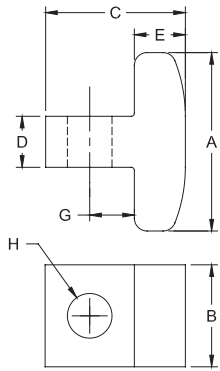
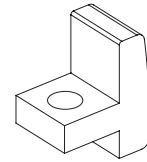
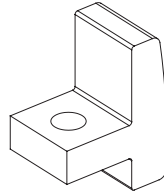
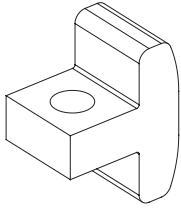


Phone: 800-933-6779

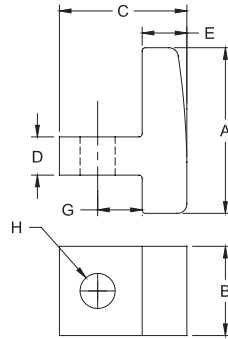
Fax: 205-663-3221

Email: sales@nsrw.com

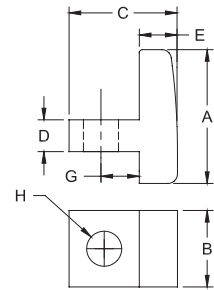
## WELDING MACHINE CONTROL CONTACTORS



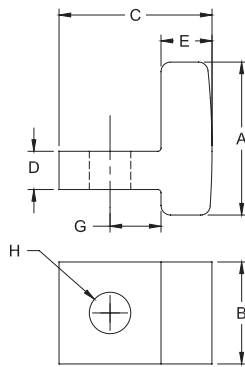
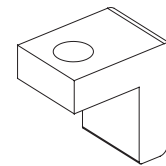
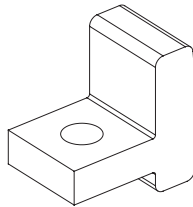
16-1303  
CMW<sup>®</sup>353



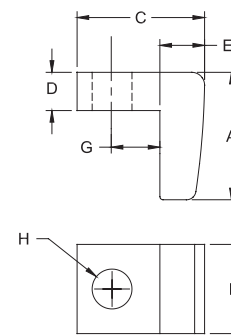
16-1304  
CMW<sup>®</sup>353



16-1306  
CMW<sup>®</sup>353



16-1307  
CMW<sup>®</sup>353



16-1309  
CMW<sup>®</sup>353

For use primarily in resistance welding controls CMW maintains standard stocks of five contacts listed. They consist of CMW<sup>®</sup>353 material, a predominately copper alloy possessing arc resisting properties.

CMW<sup>®</sup>353 material has the ability to interrupt the current in a short time with minimum arc hangover. Because of the arc resistant characteristics of the metal, only the desired number of cycles of current are transmitted to the welding machine. Uniform welding quality is obtained because no additional current passes through the control, since CMW<sup>®</sup>353 material tends to prevent the arc from restriking.

| Contactor Part No. | Overall Length A | Width B | Height C | D    | E    | G     | Hole Dia. H |
|--------------------|------------------|---------|----------|------|------|-------|-------------|
| 16-1303            | 1-3/4            | 1       | 1-3/8    | 1/2  | 1/2  | 7/16  | 7/16        |
| 16-1304            | 1-5/8            | 7/8     | 1-1/4    | 3/8  | 7/16 | 7/16  | 11/32       |
| 16-1306            | 1-5/16           | 3/4     | 1-1/16   | 5/16 | 3/8  | 3/8   | 11/32       |
| 16-1307            | 1-1/2            | 1       | 1-1/2    | 3/8  | 1/2  | 1/2   | 11/32       |
| 16-1309            | 1-1/4            | 7/8     | 1-1/4    | 3/8  | 7/16 | 15/32 | 25/64       |

EXAMPLE: 16-1303

