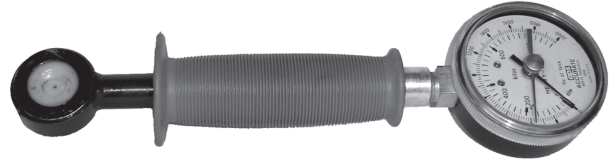
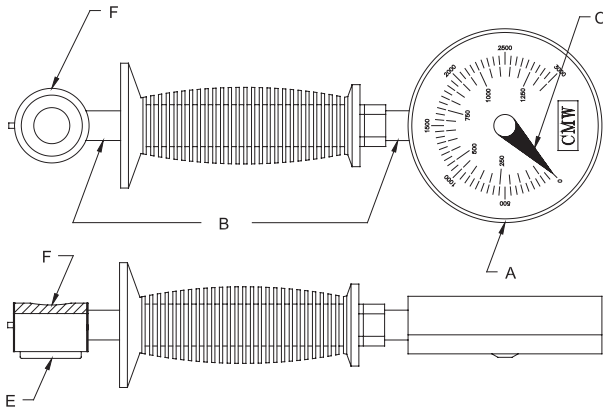


FORCE GAUGE



Gauge may be repaired or calibrated upon returning to CMW.

APPROXIMATE PRESSURE EXERTED BY AIR CYLINDER SIZE

Diameter Inches	Cylinder area Sq. In				
4	= 12.5	X	Welder	=	Electrode
5	= 19.5	X	Gauge	=	Force
6	= 28.0	X	Pressure	=	Pressure
8	= 50.0	X		=	

FEATURES AND SPECIFICATIONS

- Dependable, accurate, and fast
- 1% accuracy at 50% of scale reading
- Available in all popular ranges
- Standard and Deluxe gauges leave measurement after test.
- Certifiable

USE WITH

- Press type welding machines
- Rocker type welding machines

ORDERING INFORMATION AND DIMENSIONS

Part Number	Gauge Type	Sensor	Connection	Force Range	Live	Pad	Rear Pad (Optional)
		A	B	C	D	E	F
LC2564-73	STANDARD	LC2	LC25	LC2564	LC2564-7	LC2564-73	-
LC2164-7391	DELUXE	LC2	LC21	LC2164	LC2164-7	LC2164-73	LC2164-7391
LC8568-73	DIGITAL	LC8	LC85	LC8568	LC8568-7	LC8568-73	-

CREATE GAUGE NUMBER FROM BUILD A FORCE GAUGE OPTIONS BELOW FOR GAUGE TO SUIT YOUR NEEDS

LC = Load Cell Sensor A	Connection B	Force Range C	Live D	Pad E	Rear Pad (Optional) F
1 = CUSHIONED SENSOR	1 = FLEX/SW 15° 11" OAL *	5 2 = 300	7	1 = FLAT POLY	9 1 = FLAT*
2 = 2.5 W/POINTER ^ *	2 = FLEX/SW 90° 15" OAL	5 6 = 600	7	2 = FLAT SS	
3 = 4.0 W/O POINTER	3 = FLEX/SW 180° 19" OAL	6 0 = 1000	7	3 = 3/4" LOCATOR POLY ^ *	
4 = 4.0 W/POINTER	4 =	6 4 = 2000 ^ *	7	4 = 3/4" LOCATOR SS	
5 = 4.5 PROCESS	5 = STANDARD 5" GRIP ^	6 6 = 3000	7	5 = 5" RADIUS POLY	
6 = 4.5 W/POINTER	6 = 6" O.A. W/O GRIP	6 8 = 5000 ¹	7	6 = 5" RADIUS SS	
7 = CUSTOM	7 = UNDER 7" O.A.	7 2 = 10000 ²	7	7 = THIN (LOW PROFILE)	
8 = DIGITAL	8 = SWIVEL ONLY	¹ MUST ADD SS LIVE PAD	7	8 = THIN (POLY)	
9 =	9 =	² SS LIVE PAD AND FLAT REAR PAD	7	9 = THIN (SS)	

^ = STOCK STANDARD GAUGE

* = STOCK DELUXE GAUGE